

# When the power goes out

Electric power companies train their repair crews to restore the power as fast as possible when wind or ice interrupts service; a look at their strategy:

## Specialized work crews

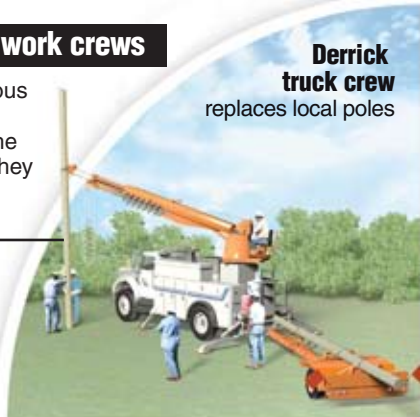
Crews use various kinds of trucks, depending on the kind of repairs they are making

### Wooden poles

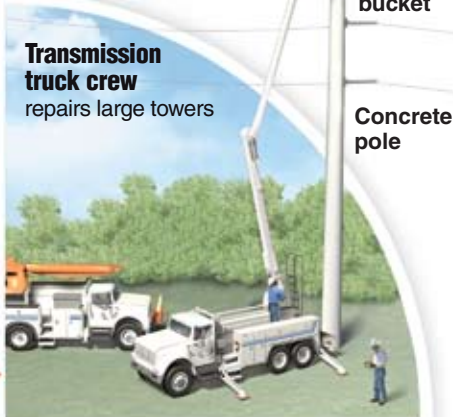
are usually pine, pressure-treated with a preservative

### Trouble truck

is a one-person unit, sent to investigate and repair small-scale problems



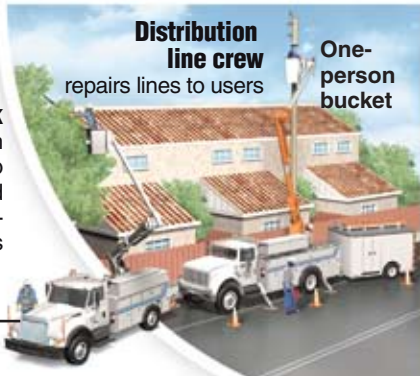
**Derrick truck crew**  
replaces local poles



**Transmission truck crew**  
repairs large towers

**Two-person bucket**

**Concrete pole**



**Distribution line crew**  
repairs lines to users

**One-person bucket**



**Rough terrain crew**  
repairs lines away from streets and roads

**Two-person bucket**

**2nd priority**  
Hospitals, police and fire stations, gas stations, supermarkets, apartment buildings

## Setting priorities

All repairs go on simultaneously, but some are given highest priority

**1st priority** Power-generating plants, transmission lines and transformer substations

**3rd priority** Small neighborhoods and individual homes